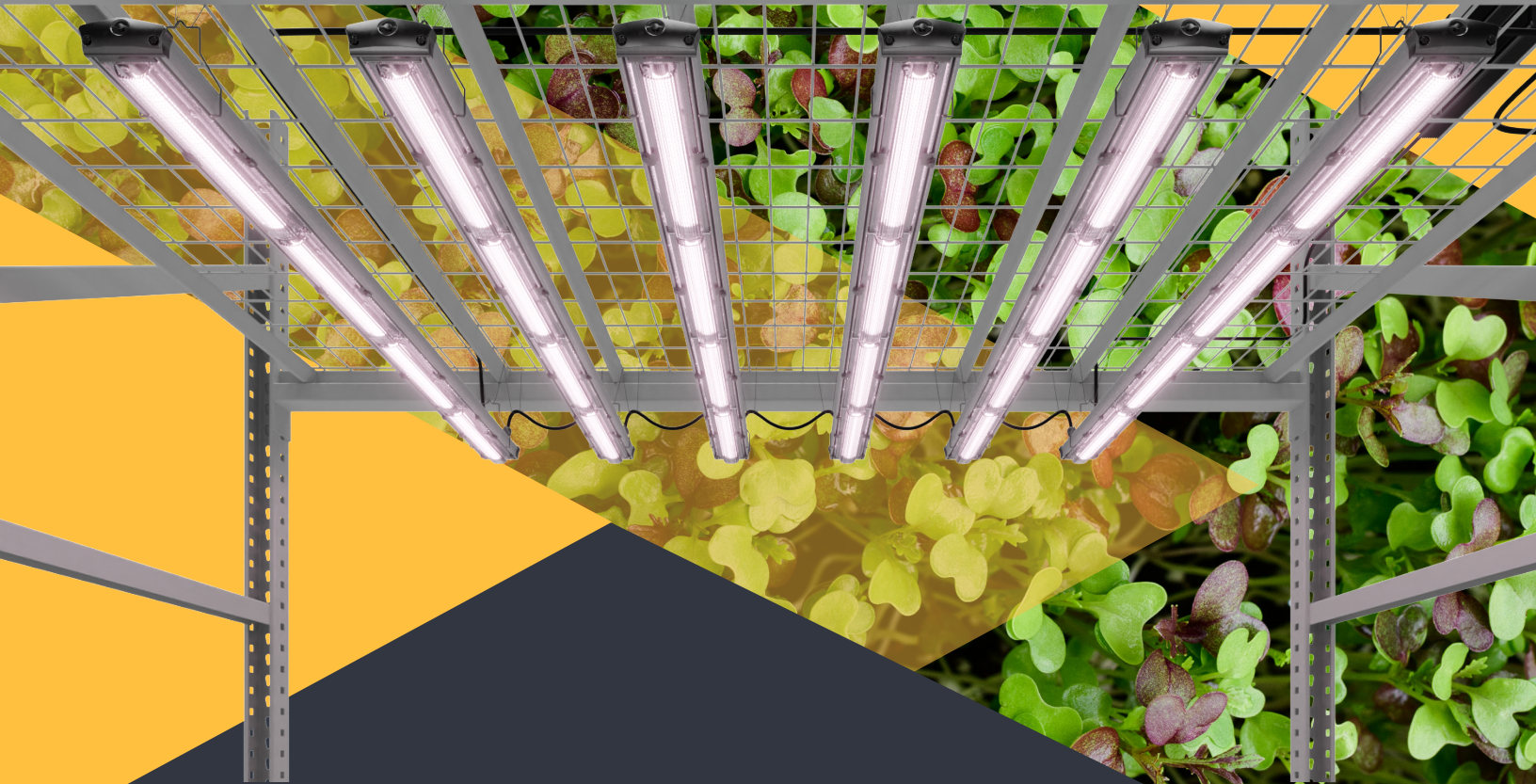


GE current
a Daintree company

LED HORTICULTURE LIGHTING SYSTEMS



Arize Factor[®] ML300



Scalable lighting system for multi-layer cultivation

Optimized

Three broad light spectrums optimized for efficiency encourage growth at every stage, from seed to harvest

Scalable

Modular 4-, 5-, 6- and 8-bar arrays offer a variety of power levels, and multiple mounting options install quickly on any grow rack

Powerful

The unique optical design of the ML300 allows growers to meet PPF needs with up to 3x fewer fixtures

Assembled in the USA

Trusted manufacturing, a standard five-year warranty and a >50,000 hour lifetime ensure consistent, predictable yields for years to come

Visit www.led.com for the latest in lighting innovations from the inventors of the LED

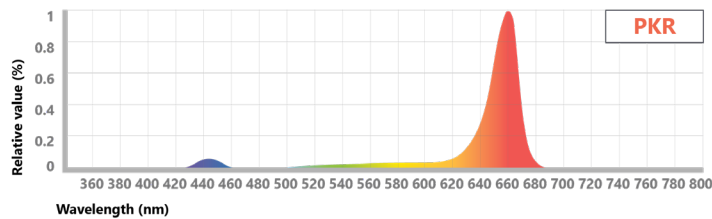


Arize Factor® ML300

Spectrums

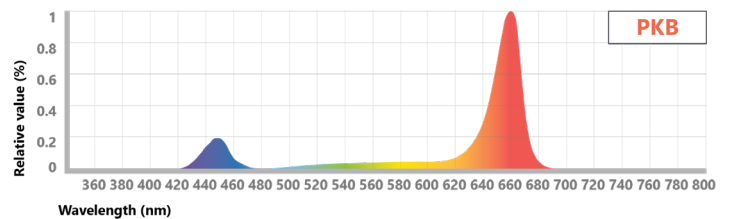
Type R

High red light to optimize plant growth and photosynthesis



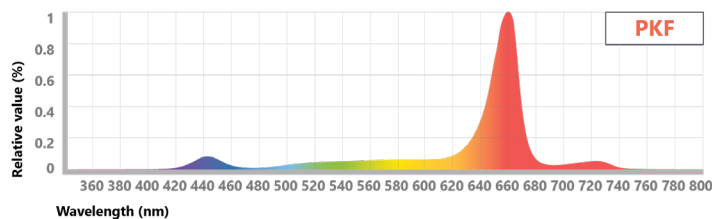
Type B

Light that supports biomass and secondary metabolite production



Type F

Encourages an expansion response for more robust growth



Spectrum Photon Distribution

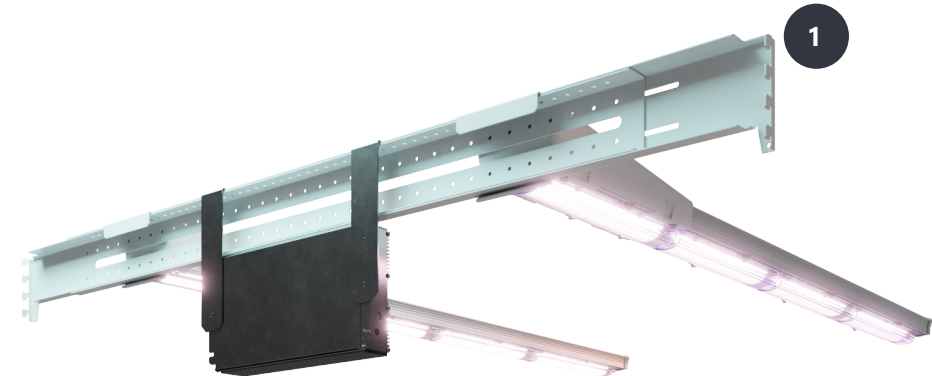
Ratio	Blue PF	Green PF	Red PF	Far Red PF
PKR	7.0%	16.0%	76.0%	1.0%
PKB	15.0%	14.0%	70.0%	1.0%
PKF	7.0%	16.0%	72.0%	5.0%

Spectrum Table

Array	Spectrum	Photon Flux ¹ ($\mu\text{mol/s}$)	Power ² (W)	Efficacy ² ($\mu\text{mol/J}$)	DC Input Voltage	Light Bar Model No. ³
4-bar	PKR	1148	415	2.8	45	GEHF-MPKRW1
	PKB	1152	415	2.8	45	GEHF-MPKBW1
	PKF	1134	423	2.7	45	GEHF-MPKFW1
5-bar	PKR	1436	519	2.8	45	GEHF-MPKRW1
	PKB	1440	519	2.8	45	GEHF-MPKBW1
	PKF	1417	529	2.7	45	GEHF-MPKFW1
6-bar	PKR	1723	622	2.8	45	GEHF-MPKRW1
	PKB	1728	622	2.8	45	GEHF-MPKBW1
	PKF	1701	635	2.7	45	GEHF-MPKFW1

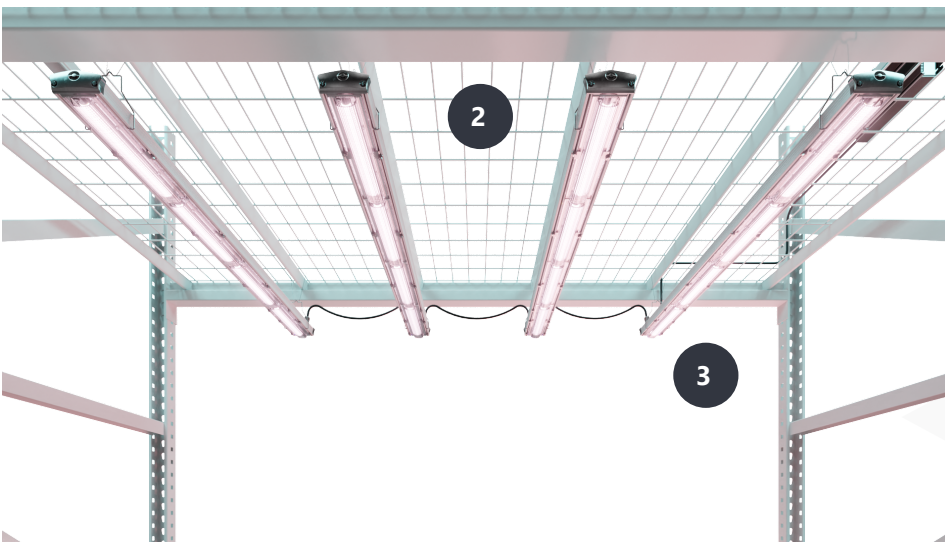
¹ Typical PPF +/-10% ² Tested at maximum input voltage of 480VAC ³ See Order Code Table on page 4 for ordering logic

Why Factor?



1 Grow Cart Mount

Factor adapts to your grow, not the other way around. The system can be installed on the side of a grow cart using the transversal bar, allowing it to fit below ventilation systems.



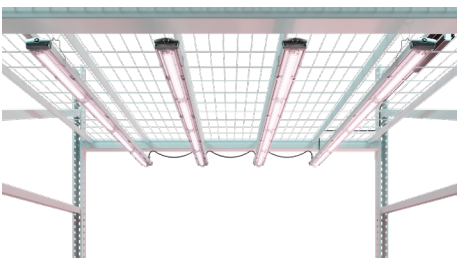
2 Suspended Mount

One size fits all. Straightforward hooks allow the light bars to be hung from any rack, and the power supply can be remotely mounted, meaning the Factor can be used in any setup.

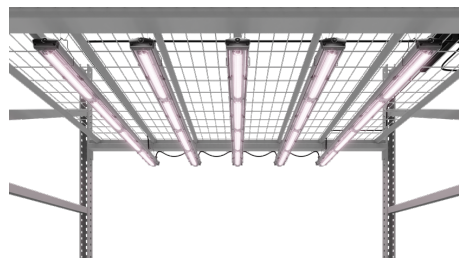
3 Reliability

We perform the most extensive, stringent testing in the industry. We test the LED, water and dust ingress protection, sub-system and complete system at our in-house and independent laboratories around the world. Validation of our designs, components, products and processes include high temperature, high humidity and accelerated life testing.

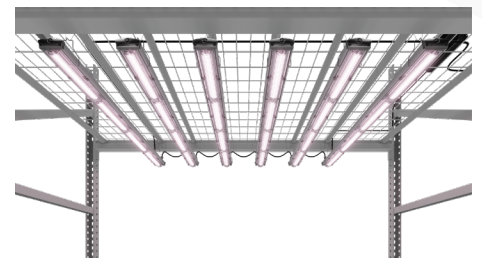
Arrays



4-bar



5-bar

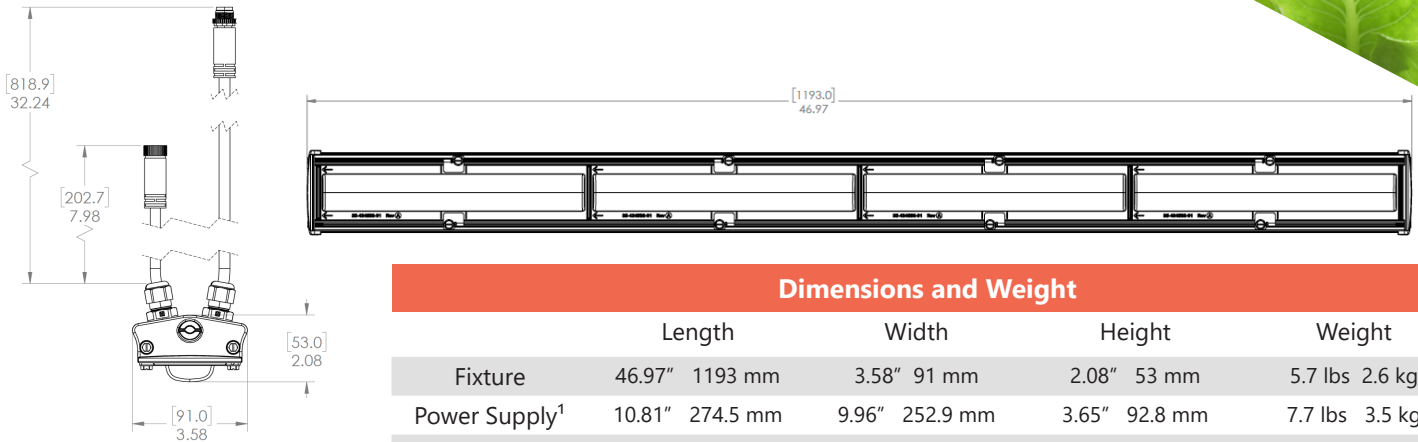


6-bar

The Factor ML300 adapts to your setup, not the other way around. Customize the number of bars and spacing for tailored coverage and PPFD.



Mechanical Outline



Dimensions and Weight

	Length	Width	Height	Weight
Fixture	46.97" 1193 mm	3.58" 91 mm	2.08" 53 mm	5.7 lbs 2.6 kg
Power Supply ¹	10.81" 274.5 mm	9.96" 252.9 mm	3.65" 92.8 mm	7.7 lbs 3.5 kg
Power Supply ²	12.60" 320 mm	5.94" 151 mm	1.81" 46 mm	7.1 lbs 3.2 kg

¹ Input voltage options 2, 3 and 7 ² Input voltage option 8

Specifications

Dimming Range	0-10V	Power Factor	>0.9
Max Source Current	450uA	Max. Remote Mount Distance	6 ft (1.83 m)
Dim-to-off ¹	Yes	Cooling	Passive
Dim Off Voltage	0.35-0.65 V (typ. 0.5 V)	Light Distribution	140°
Dim On Voltage	0.55-0.85 V (typ. 0.7 V)	Operating Environment	0°C to 40°C (32°F to 104°F)
Dimming Output Range	10%-100%	IP Rating	IP65
Absolute Maximum Dimming Voltage	20V	Lifetime	L90: >50,000 hours ²
For input voltage option 3, dimming control input is non-isolated from Class 1 driver output circuit. Use with sink dimmers only		Warranty	Five-year system warranty
		System Certifications	cULus E492907, CE, UKCA

¹ Refer to installation guide for dimming functionality details

² Tested at 30°C per TM-21

Order Code Table

GEHF							W	1
Product ID	Model	Mounting	Spectrum	Input Voltage	Distribution	Options	Gen	
GEHF	M4 = 4x MO bars, 1x 600W driver	C = Grow Cart	PKR	2 = 120-277V (UL)	W = Wide Batwing	X = None	1	
	M5 = 5x MO bars, 1x 600W driver	S = Suspended	PKB	3 = 277-480V (UL)		5 = NEMA 5-15P ²		
	M6 = 6x MO bars, 1x 600W driver		PKF	7 = 220-240V (CE)		6 = NEMA 6-15P ²		
	E8 = 8x MO bars, 1x 600W driver ⁴			8 = 380-415V (CE)		7 = NEMA L7-15P ³		

² Only available with input voltage option 2

³ Only available with input voltage options 2 or 3

⁴ Only available with PKB spectrum



© 2022 Current Lighting Solutions, LLC. All rights reserved. GE and the GE monogram are trademarks of the General Electric Company and are used under license. Information provided is subject to change without notice. All values are design or typical values when measured under laboratory conditions. Horticultural lighting. Not suitable for household illumination.

Electrical products must not be thrown out with domestic waste. They must be taken to a communal collecting point for environmentally friendly disposal in accordance with local regulations. Contact your local authorities or stockist for advice on recycling. The packaging material is recyclable. Dispose of the packaging in an environmentally friendly manner and make it available for the recyclable material collection-service.

Not all product variations listed on this page are DLC qualified. Visit qpl.designlights.org/horticulture to confirm qualification.