



HORTI

MASTER GreenPower 600W 400V E40

High Pressure Sodium lamp with clear outer bulb, optimized growthlight output and maintenance

Warnings and Safety

- A lamp breaking is extremely unlikely to have any impact on your health. If a lamp breaks, ventilate the room for 30 minutes and remove the parts, preferably with gloves. Put them in a sealed plastic bag and take it to your local waste facilities for recycling. Do not use a vacuum cleaner.

Product data

General Information	
Cap-Base	E40 [E40]
Operating Position	UNIVERSAL [Any or Universal (U)]
Life to 5% Failures (Nom)	12000 h
Life To 10% Failures (Nom)	14000 h
Life to 20% Failures (Nom)	16000 h
Life to 50% Failures (Nom)	20000 h
System Description	System 400V

Light Technical	
Color Code	220 [CCT of 2000K]
Luminous Flux (Rated) (Nom)	85550 lm
Photosynthetic Photon Flux (PPF)	1120 $\mu\text{mol/s}$
PPF Maintenance 2000 h	100 %
PPF Maintenance 4000 h	100 %
PPF Maintenance 6000 h	97 %
PPF Maintenance 8000 h	96 %
PPF Maintenance 10000 h	94 %
PPF Maintenance 12000 h	92 %
Chromaticity Coordinate X (Nom)	0.526

Chromaticity Coordinate Y (Nom)	0.420
Correlated Color Temperature (Nom)	2000 K
Luminous Efficacy (rated) (Nom)	142 lm/W
Color Rendering Index (Max)	-
Color Rendering Index (Nom)	30

Operating and Electrical	
Lamp supply voltage	400 V [400]
Power (Rated) (Min)	608.0 W
Power (Nom)	602.5 W
Lamp Current (EM) (Nom)	3.64 A
Ignition Supply Voltage (Max)	398 V
Ignition Peak Voltage (Max)	3500 V
Re-Ignition Time (Min) (Max)	1 min
Ignition Time (Max)	10 s
Voltage (Max)	205 V
Voltage (Min)	175 V
Voltage (Nom)	190 V

Controls and Dimming

Dimmable	Yes
Run-Up Time 90% (Max)	5 min

Mechanical and Housing

Bulb Finish	Clear
Cap-Base Information	-
Bulb Shape	T46 [T 46mm]

Approval and Application

Mercury (Hg) Content (Nom)	42.0 mg
Energy Consumption kWh/1000 h	663 kWh

Luminaire Design Requirements

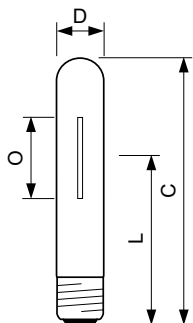
Bulb Temperature (Max)	400 °C
------------------------	--------

Cap-Base Temperature (Max)	250 °C
----------------------------	--------

Product Data

Full product code	871829123296400
Order product name	MASTER GreenPower 600W 400V E40
EAN/UPC - Product	8718291548386
Order code	928159209214
Numerator - Quantity Per Pack	1
Numerator - Packs per outer box	54
Material Nr. (12NC)	928159209214
Net Weight (Piece)	0.179 kg
ILCOS Code	ST-600-H/S-E40

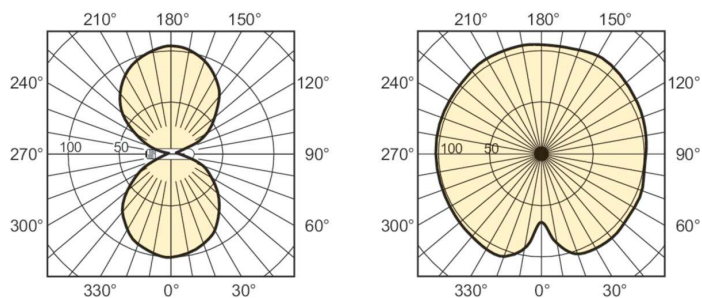
Dimensional drawing



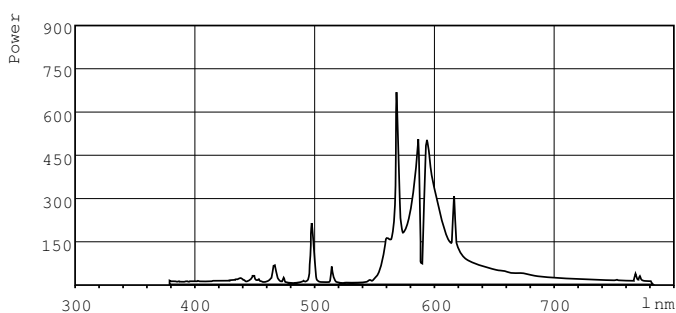
SON GreenPower 600W 400V E40

Product	D (max)	O	L	C (max)	A
MASTER GreenPower 600W 400V E40	47 mm	102 mm	164 mm	279 mm	205 mm

Photometric data

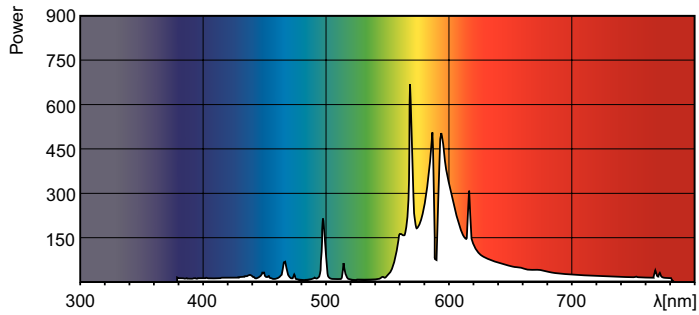


LDLD_SONHORT_0001-Light distribution diagram



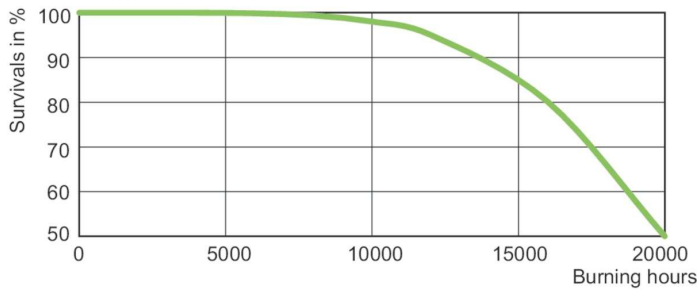
LDPB_SONHORT_0003-Spectral power distribution B/W

Photometric data

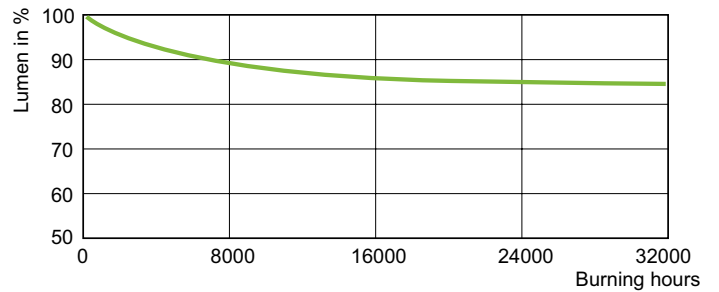


LDPO_SONTHORT_0003-Spectral power distribution Colour

Lifetime



LDLE_SONTHORT_0007-Life expectancy diagram



LDLM_SONTHORT_0001-Lumen maintenance diagram

